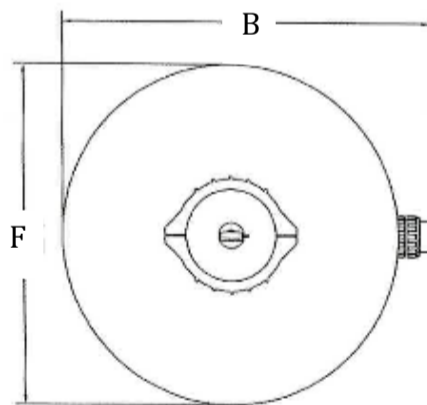
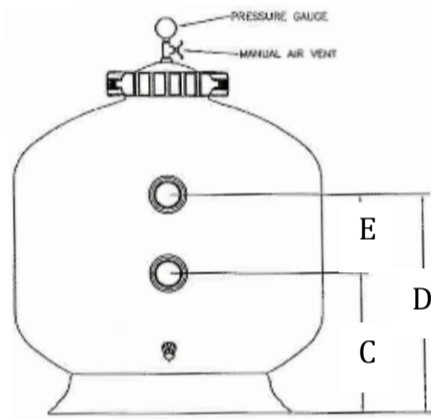
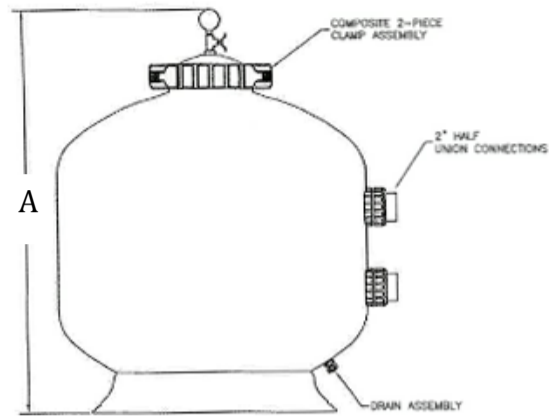


CC-I80/I90/I140/I150

Clear Water Supplies' contact chambers are specially designed to house ProMoss™

- 5.08 cm (2") and 50 mm PVC Connections available
- In line flow meter (0-20 gpm) and 2 shut off valves (for inflow and outflow) required and are NOT included
- Automatic air relief may be preferred by operators, not included
- Hard piping required for installation
- Drain port 1.905 cm (3/4") diameter
- Flow rate: 15 gpm, ideal
- Max operating pressure: 50psi

Dimension (cms)				
	CC-I80	CC-I90	CC-I140	CC-I150
A	83.058	95.4786	101.7524	115.57
B	55.1688	70.4088	86.9188	100.5586
C	23.495	29.5402	35.7886	39.6748
D	43.815	49.8602	56.1086	59.9948
E	20.32	20.32	20.32	20.32
F	47.3456	62.5856	79.0956	92.71
ProMoss™ 3 Capacity				
No. of bags	3	6	12	16



For technical support please contact [Clear Water Supplies International Limited](http://www.CWSNaturally.co.uk) or visit www.CWSNaturally.co.uk